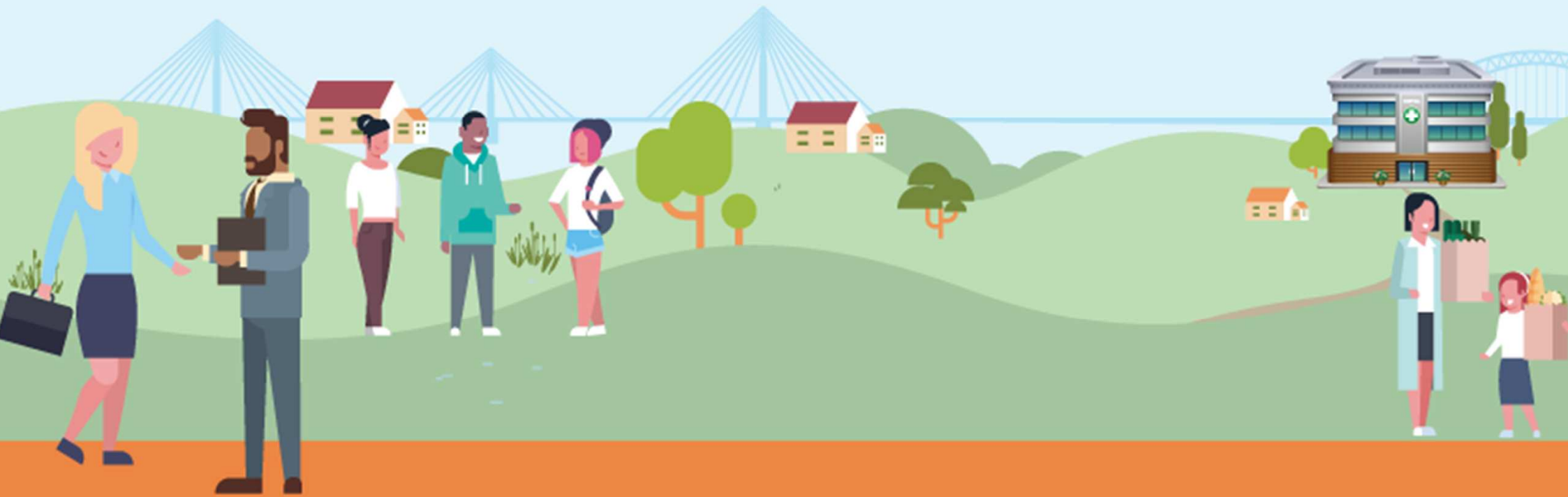


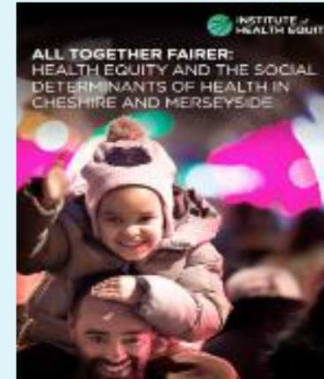
One Halton HWBB Strategy



One Halton HWBB Strategy Development



- Workshops – August – March with support from LGA & AQUA
- Life course approach, Marmot and the wider determinants, Start Well, Live Well & Age Well
- Co-produced 5 year strategy 2022-2027 with review 2024
- Transformational
- Focus on broader health, public health, and social care needs of the population.



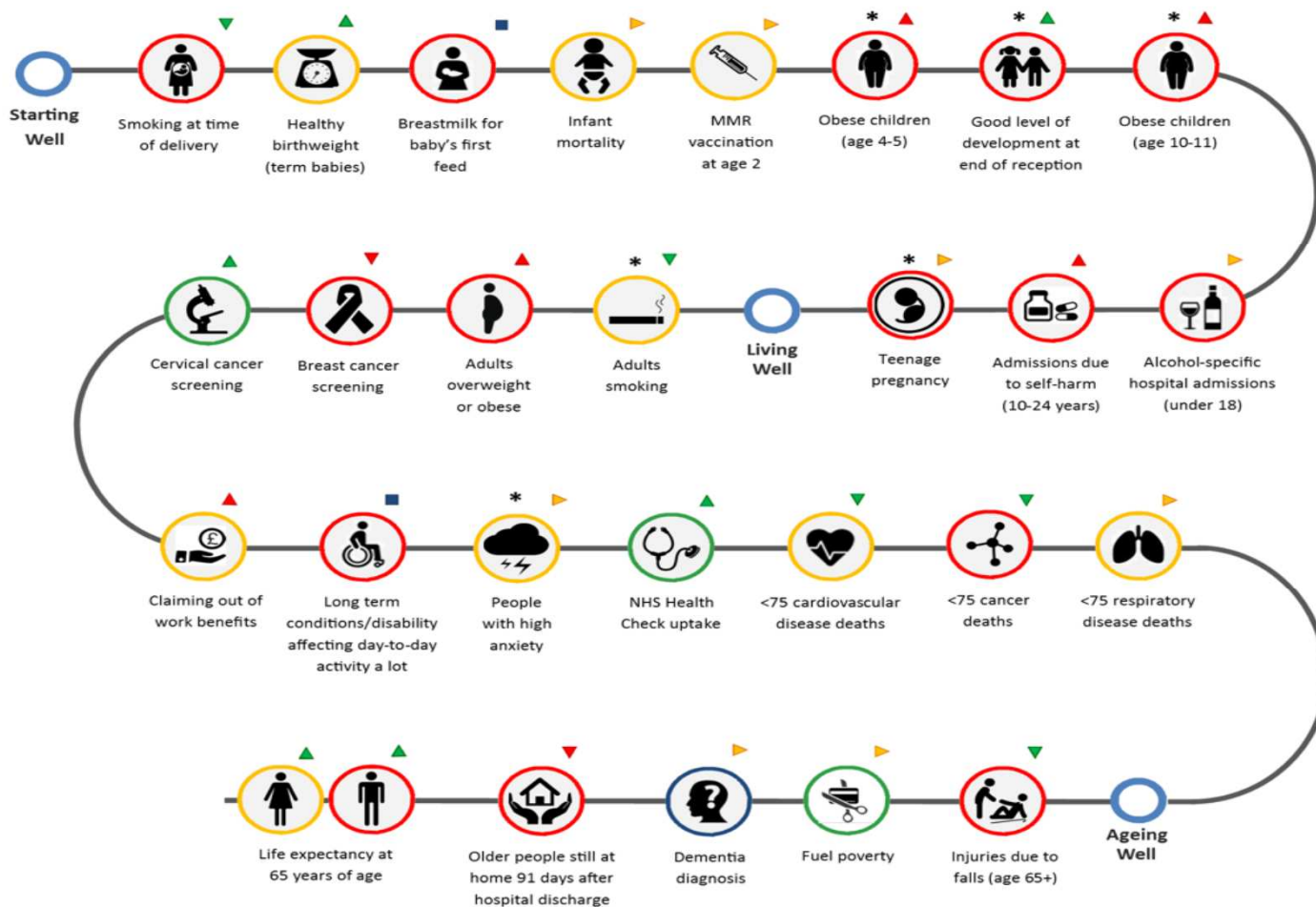
LGA



Halton's life course statistics 2021

A comparison to the North West

* INDICATES NATIONAL DATA COLLECTION HAS BEEN AFFECTED BY COVID-19



HALTON FACTS

Population

About **129,400** people live in Halton.

By 2041, this is projected to change:

- age 0-14 ↓ 11%
- age 15-64 ↓ 5%
- age 65+ ↑ 38%

Deprivation

48.7% of Halton's population live in the top **20%** most deprived areas in England.

Child Poverty

19.6% of children aged 0-15 live in relative low income households

KEY

Direction of travel

- ▲ Improved since last period
- ▶ Similar to last period
- ▼ Worse than last period
- No Comparator

Statistical significance to North West

- Better
- No different
- Worse
- Lower

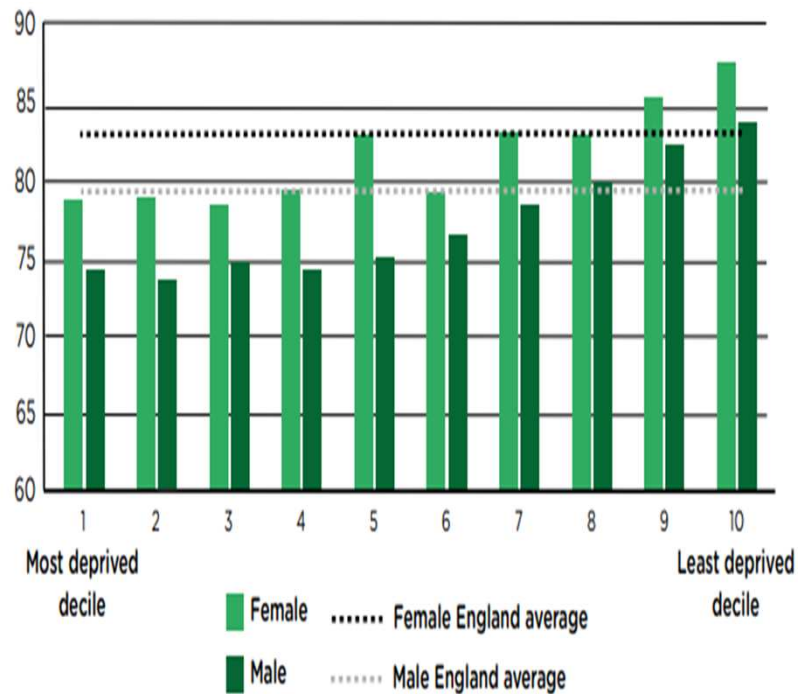
For more information, please contact Halton Borough Council's Public Health Intelligence Team: health.intelligence@halton.gov.uk

Icons made by Flaticon and available here: www.flaticon.com
 Concept developed from Gateshead PHAR 2013/14 and Leicestershire PHAR 2015

Two Overarching Goals

- Increase life expectancy

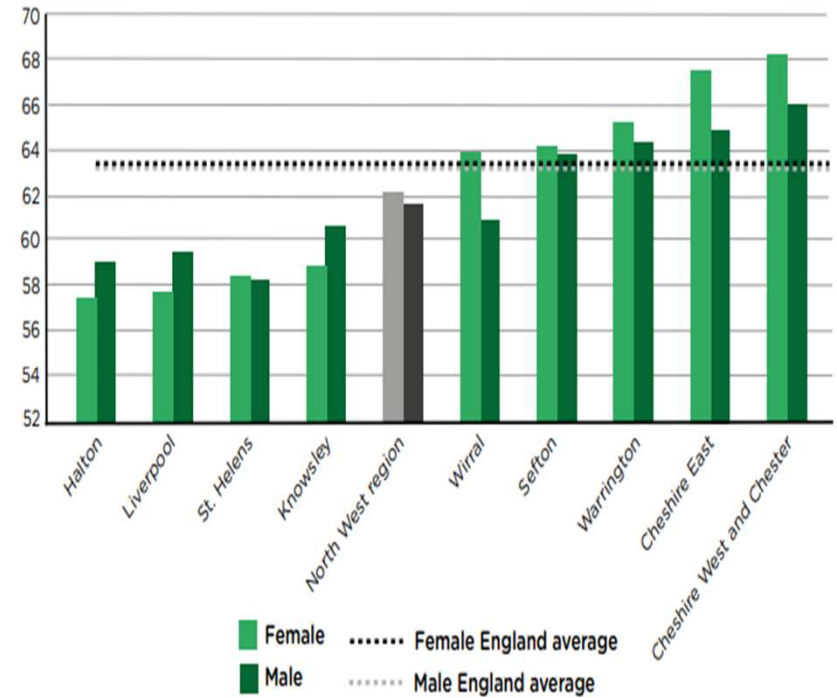
Life expectancy (years)



Source: Office for National Statistics (90)

- Increase HEALTHY life expectancy

Years



Source: Office for National Statistics. (90)

Strategy Development

Priorities have been identified by stakeholders and partners.

Phased approach in recognition that systems approach is new for many participants

2 years high level outcomes with process outcomes to enable quality review and early learning, this will enable us identify which sectors of system need added support or challenge

5 year outcomes aiming for big strategic outcomes- reduction in health inequalities as measure by reduction in Health Life expectancy, Improvement in school readiness score and reduction in the internal (ward) life expectancy gap

Is dependant up all partners adopting the strategic approaches.



Thematic Priorities



Wider Determinants

- Delivering Marmot; Employment/ Workforce

Starting Well

- Enabling Children and Families to live Healthy Independent Lives

Living Well

- Provide a supportive environment where systems work efficiently and support everyone to live their best life

Ageing Well

- Enabling Older Adults to live Full Independent Healthy Lives.

The Wider Determinants of Health



GOAL : A more financially active and enabled community who are employed in good jobs that provide greater financial stability, improves quality of life and provide better health outcomes

By 2024

- Adopt healthy workplace standards charter across all large employers.
- Increase recruitment and retention of people with a disability or long-term condition.
- Ensure all staff can identify need and respond

By 2027

- Local health and care recruitment offer
- Promotion of healthy workplaces
- Targeted offer to the wards with lower uptake.
- Enhanced offer to older unemployed adults.

Starting Well



GOAL : More financially stable, informed and supported families with children who have better health outcomes

By 2024

- Establish two family hubs
- Link Families at risk of financial hardship to support through effective signposting and referrals

By 2027

- Improvement in children's health, social and educational service provision
- Support community development to support children and their families decision making about health
- Improving access to services
- Focus on early support and help
- Improve communication across service providers as well as with children and their families

Living Well



GOAL : A more supported and enabled community who are able to understand where to go to get the support and care they need in time.

By 2024

- All NHS partners sign up to NHS Prevention Pledge
- Early diagnosis and screening programs – improved access/ comms
- Improve uptake of vaccination programs for the most at risk individuals.
- Deliver Core20PLUS5
- Community conversation about how to promptly access the right care and social support.

By 2027

- Improve care pathways – including those supporting discharge
- Anchor Organisations
- New community development initiatives
- Improving access to services for people and groups most at risk of poor health
- Accountability and continuous quality improvement from information collection
- Develop wellbeing, health and care support resources closer to people
- Deliver the Marmot objectives.

Ageing Well



GOAL : A more active and independent older population who are able to live at home or are supported to get the care they need.

By 2024

- Early diagnosis and screening programs – improved access/ comms
- Improve uptake of vaccination programs for the most at risk individuals.
- Deliver Core20PLUS5
- Community conversation about how to promptly access the right care and social support.

By 2027

- Care Coordination + Advocacy VSCE/Partners
- Integrating and strengthening services and wellbeing support for older people
- Improve care pathways – including those supporting discharge.

Next Steps

Dependencies/enablers

Local Data and Intelligence
Leadership
Finance
Workforce
Digital
Estates
Evaluation
Engagement
Innovation
Research

Wider Care
and
Support

Enhanced
Access and
Communication

Employability
and
Workforce

Delivery
Model

Strategic
Objectives

Early
Intervention
and
Diagnosis

Next stages, launch, delivery plan, metrics, monitoring and review

Any Questions?

